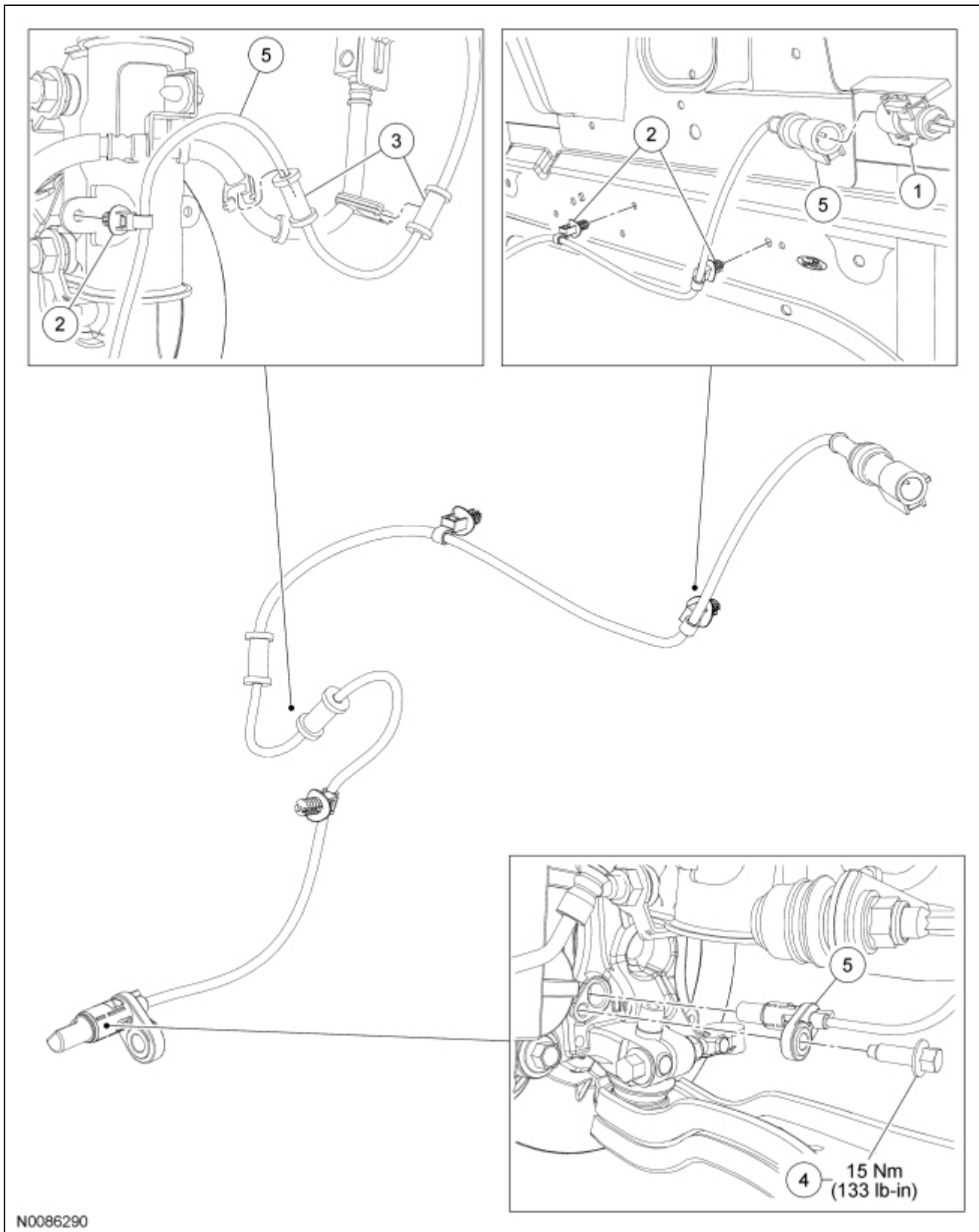


Wheel Speed Sensor — Front



N0086290

Item	Part Number	Description
1	—	Wheel speed sensor electrical connector (part of 14407)

2	—	Wheel speed sensor harness pin-type retainers (part of 2C204) (3 required)
3	—	Wheel speed sensor grommet retainers (part of 2C204) (2 required)
4	W500020	Wheel speed sensor bolt
5	2C204	Wheel speed sensor

Removal and Installation

1. With the vehicle in NEUTRAL, position it on a hoist. For additional information, refer to [Section 100-02](#).
 2. Disconnect the wheel speed sensor electrical connector.
 3. Disconnect the 3 wheel speed sensor harness pin-type retainers.
 4. Disconnect the 2 wheel speed sensor grommet retainers from the brake hose clips.
 5. Remove the wheel speed sensor bolt.
 - To install, tighten to 15 Nm (133 lb-in).
 6. Remove the wheel speed sensor and harness assembly.
 7. To install, reverse the removal procedure.
-